

Chop Cutter

**BOON-360SP II**

**Poseidon II**



The cutting edge  
**nantsune**

Maximum Speed

**420rpm**

Highest Yield Rate Ever !

All Brand new **POSEIDON II**



Optional compressor needed to operate.



Suit with processing facility.

For frozen products.

# Maximum speed 420rpm !

BOON-360SP II

POSEIDON II

Pork Belly thin slicing

Pork Loin thick slicing

Beef thin slicing

## Improved end yield rate

Improved **17mm**  
Thickness of end  
yield.



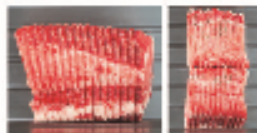
## Easier- operational touch screen



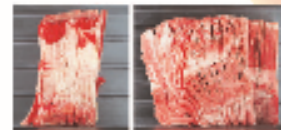
Slicing thickness, speed, positioning  
can be set in more visible and easier  
operational touch screen.

## Improved Productivity

420rpm up to 3mm  
thickness slicing

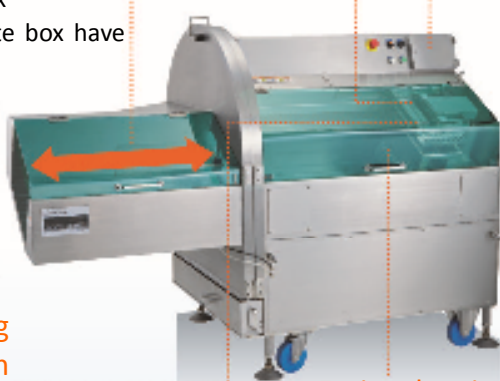
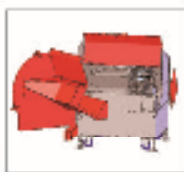


Set slicing thickness  
by 0.1mm



## Safety Improvement

- Longer receiving box
- All covers and waste box have safety sensor.



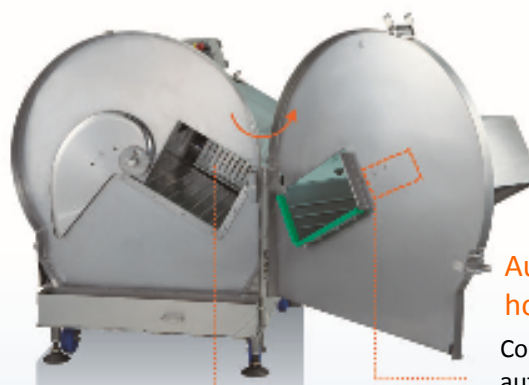
## Automatic holding stay when chucking

Automatic holding  
stay makes more  
stable chucking with  
no error.  
(Optional non-  
Automatic holding  
stay available.)



## Easier cleaning

Can detach holding board with no tool.



## 420rpm speed

Slice up to  
360mm width  
meat in -5C - -2C.  
Maximum slicing  
speed is 420rpm.

## Automatic counter holder

Comes out  
automatically to hold  
the first slice to sit in  
correct position.

## Air-forced chucking

Air-forced  
chucking  
contributes  
energy  
saving.



## Specifications

Dimensions	WxDxH : 2,012 x 1,093 x 1,451 (mm)	
Weight	765Kg	
Power	Varies	
Motor	Blade motor 3.7KW, Feeder 1.5KW	
Power rating	640W	
Slicing speed	420 Slices/ minute	
Slicing thickness/ speed	0 - 3.0mm 420rpm	0 - 3.5mm 400rpm
	0 - 4.0mm 380rpm	0 - 4.5mm 365rpm
	0 - 5.0mm 345rpm	0 - 6.0mm 330rpm
	0 - 7.0mm 310rpm	0 - 8.0mm 300rpm
	0 - 15.0mm 240rpm	0 - 30.0mm 160rpm
Slicing dimensions	WxLxH: 360 x 700 x 200 (mm)	
	When using automatic positioning function, slicing Length is 600mm	
Slicing temperature	-5C - -2C (varies)	
Air consumption	0.5MPa 30L/min. 8 φ tube diameter	

